

YEAR 2015

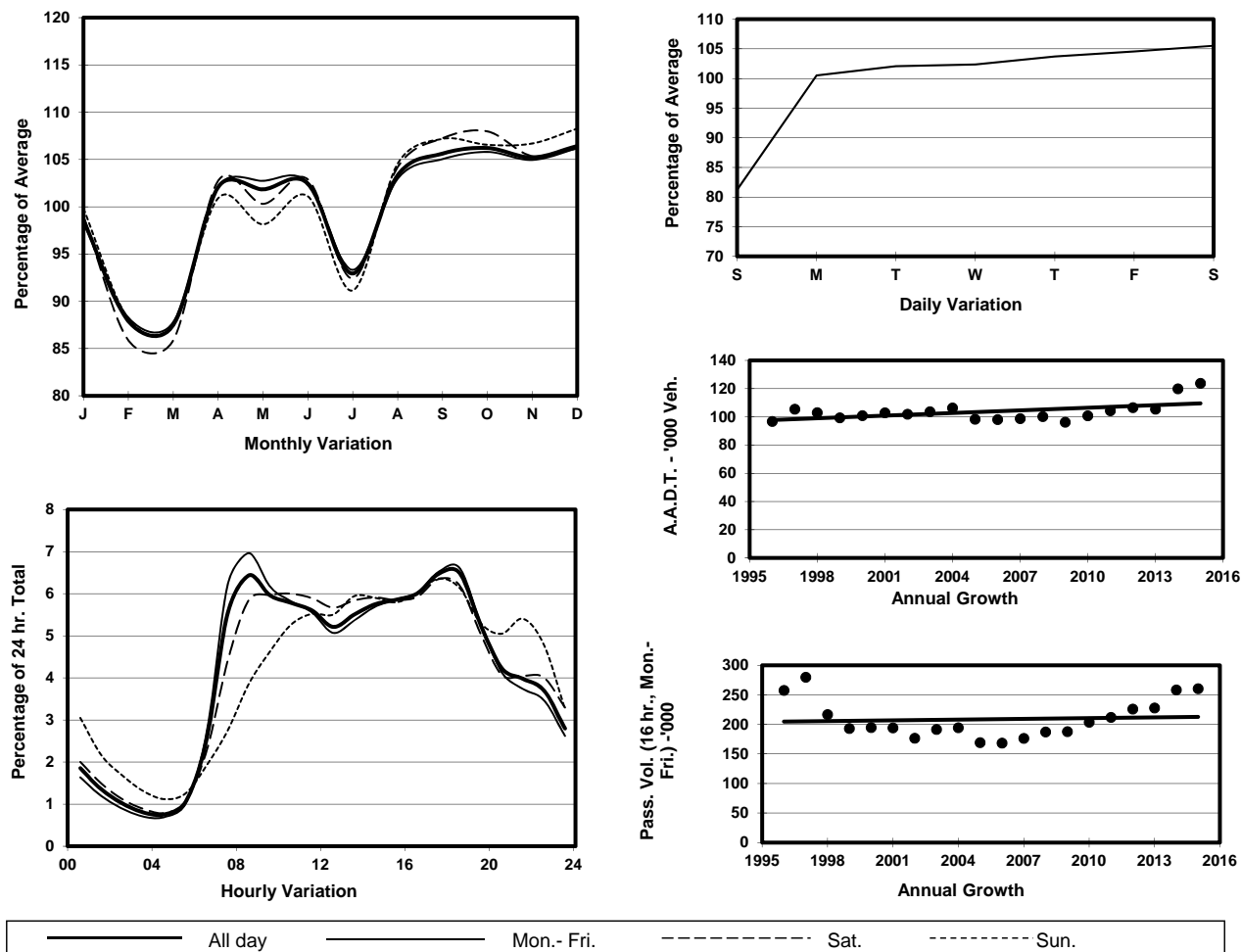
Location

Screenline Y-Y(Boundary between Tuen Mun & Yuen Long)

Stations on Cordon/Screenline

5025 and 6213

1. TRAFFIC FLOW VARIATION AND GROWTH



2. TRAFFIC CHARACTERISTICS (BY DIRECTION)

Parameter	All - Day	Mon. - Fri.	Sat.	Sun.
EAST BOUND				
A.A.D.T.	62990	65240	67250	52030
R 12 / 24 - %	69.3	70.6	68.6	62.2
R 16 / 24 - %	88	88.9	87.1	84.2
AM Peak Hour	0800-0900	0800-0900	0900-1000	0900-1000
One-way flow at AM peak hour	3840	4320	3760	2270
T - % (AM)	-	22.9	-	-
PM Peak Hour	1700-1800	1700-1800	1700-1800	1700-1800
One-way flow at PM peak hour	4230	4460	4340	3300
T - % (PM)	-	23.9	-	-
Prop.of commercial vehicles - 16 hr.	-	23.9	-	-
WEST BOUND				
A.A.D.T.	60830	63170	65080	49380
R 12 / 24 - %	72	73.2	71.2	65.3
R 16 / 24 - %	87.6	88.2	87	84.3
AM Peak Hour	0800-0900	0800-0900	0900-1000	0900-1000
One-way flow at AM peak hour	4130	4620	4140	2420
T - % (AM)	-	23.8	-	-
PM Peak Hour	1800-1900	1800-1900	1700-1800	1700-1800
One-way flow at PM peak hour	3870	4060	4060	3150
T - % (PM)	-	13.4	-	-
Prop.of commercial vehicles - 16 hr.	-	24.5	-	-

3. OTHER INFORMATION AND COMMENT

4. Vehicle classification and occupancy - Monday to Friday

Time		Class of vehicle									
		Motor	Private	Taxi	Private	PLB	Goods veh.		Non	Fr. Bus	
		Cycle	Car		LB		Light	M & H	Fr. Bus	SD	DD
0700-0800	Pro	3.0	32.4	12.7	1.0	2.4	23.9	16.7	6.3	0.3	1.2
	Ocp	1.1	1.3	1.9	7.0	13.4	1.5	1.2	9.1	21.9	29.8
0800-0900 Peak Hour	Pro	1.2	43.8	9.7	0.7	2.2	19.2	18.9	3.6	0.2	0.5
	Ocp	1.0	1.4	2.0	4.9	14.7	1.4	1.1	18.9	40.2	40.3
0900-1000	Pro	0.8	36.8	9.1	0.9	1.7	20.9	25.8	2.8	0.4	0.8
	Ocp	1.0	1.4	1.7	2.1	11.4	1.4	1.2	12.5	22.3	24.7
1000-1100	Pro	1.0	26.8	10.6	0.8	1.6	27.9	26.9	3.0	0.3	0.9
	Ocp	1.0	1.4	1.8	1.6	12.3	1.3	1.1	13.8	31.8	26.8
1100-1200	Pro	0.9	31.1	10.0	1.0	1.7	24.2	27.1	2.6	0.3	1.0
	Ocp	1.1	1.4	1.8	1.7	9.9	1.4	1.2	9.7	28.1	27.1
1200-1300	Pro	1.4	33.3	10.3	1.6	1.6	22.0	25.1	3.3	0.4	1.0
	Ocp	1.1	1.5	1.9	3.8	12.0	1.4	1.1	11.4	28.5	25.0
1300-1400	Pro	1.0	33.5	9.9	0.7	1.7	23.0	26.4	2.5	0.4	0.9
	Ocp	1.1	1.5	1.8	2.5	10.8	1.4	1.1	10.3	24.1	25.3
1400-1500	Pro	0.9	28.6	9.9	0.5	1.4	27.2	28.6	1.7	0.4	0.9
	Ocp	1.1	1.6	1.8	1.2	10.4	1.4	1.2	16.4	23.7	24.5
1500-1600	Pro	1.4	31.4	10.3	0.7	1.2	24.6	25.9	3.2	0.4	0.9
	Ocp	1.1	1.5	1.9	5.9	10.6	1.4	1.2	12.8	31.4	26.5
1600-1700	Pro	1.5	31.8	9.6	1.4	1.4	25.7	24.2	3.0	0.4	1.1
	Ocp	1.1	1.4	1.8	4.4	12.0	1.5	1.1	14.4	34.0	23.9
1700-1800	Pro	2.0	38.6	9.5	1.7	1.6	24.3	17.7	3.2	0.4	0.9
	Ocp	1.1	1.5	1.7	4.3	14.0	1.4	1.1	12.3	30.8	34.8
1800-1900	Pro	2.7	54.6	9.9	0.7	2.3	16.6	8.8	3.1	0.4	0.9
	Ocp	1.1	1.4	1.9	1.8	15.8	1.3	1.1	11.3	28.6	32.9
1900-2000	Pro	1.9	54.6	12.3	0.3	2.2	14.7	8.8	3.8	0.3	1.1
	Ocp	1.0	1.3	1.8	1.3	12.6	1.3	1.1	8.7	34.3	24.8
2000-2100	Pro	1.6	58.8	13.1	0.1	2.6	10.8	6.7	4.3	0.4	1.5
	Ocp	1.1	1.4	2.0	2.0	10.9	1.5	1.2	8.0	21.4	17.5
2100-2200	Pro	2.2	56.6	14.0	0.2	2.8	12.3	6.3	3.9	0.4	1.3
	Ocp	1.2	1.4	1.9	1.5	9.4	1.3	1.1	8.5	20.6	14.5
2200-2300	Pro	2.2	59.6	16.1	0.1	2.7	8.6	6.4	2.5	0.3	1.6
	Ocp	1.1	1.3	2.0	1.0	12.6	1.3	1.1	8.5	14.9	12.1
16 hours	Pro	1.6	39.7	10.8	0.8	1.9	21.1	19.5	3.3	0.4	1.0
	Ocp	1.1	1.4	1.9	3.6	12.3	1.4	1.1	11.7	27.5	25.6

Legend

Pro. Proportion of vehicles in % (Sum may not add up to 100% due to figure rounding)*

Ocp. Average occupancy of vehicles including both driver and passengers*

M&H Medium and Heavy

* All traffic data are collected from combined bounds except for one way traffic